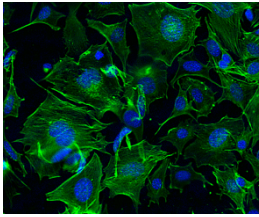


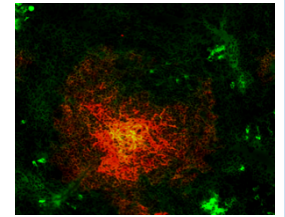


## Postdoctoral Research Fellowship in Transplant Immunology



*Podocyte cell line*

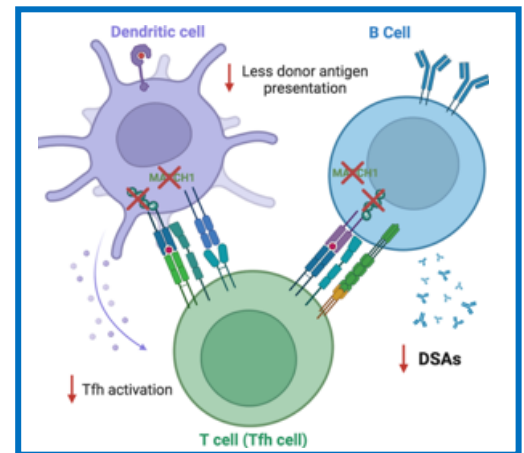
The laboratory of Dr. Leonardo Riella at the Massachusetts General Hospital, Harvard Medical School is seeking a highly motivated, independent postdoctoral researcher to join our team. Our lab investigates the fundamental mechanisms that regulate the immune system to better manage and treat transplanted patients and kidney autoimmune diseases.



*GC reaction in the spleen*

### The projects include:

1. Understanding the key target points of **B cell activation and differentiation** in transplantation and autoimmune kidney diseases.
2. The use of different **treatment strategies to modulate the humoral immune response** in mouse models of transplantation and autoimmune kidney diseases.
3. The development of new mouse models of autoimmune kidney disease by passive transfer of autoantibodies or immunizations.



**Ideal candidates** would have completed graduate training in Immunology, be proactive and a team-player and have demonstrable experience in working with:

1. Human samples and mouse models.
2. Flow cytometry, ELISA, Luminex, RNA-seq, Immunofluorescence, Immunohistochemistry (staining, data analyze and interpretation), Western Blot.
3. Cell culture (primary and cell linages).



To apply, please send an email to Mellisa ([mfay6@mgh.harvard.edu](mailto:mfay6@mgh.harvard.edu)) with a (1) cover letter outlining your research interests and how they align with the lab's research goals. (2) Curriculum Vitae (CV). (3) Contact information for two references.

Massachusetts General Hospital is a teaching affiliate of Harvard Medical School and an equal opportunity employer. All qualified applicants will receive consideration for employment without regard to race, color, religion, sex, national origin, protected veteran status or status as an individual with a disability.